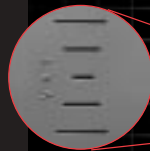


# S380A

## PREMIUM STEER

Six Rib, 19/32 tread design provides long original mileage.

Visual Alignment Indicators (VAI®) alert user to tire tracking problems.



Shoulder Protection Rib resists irregular shoulder wear.



### Applications

Long haul, over-the-highway steering and all position use.

## TIRE SPECIFICATIONS Highway - 75 mph at loads indicated unless otherwise stated.

TIRE SIZE	LOAD RANGE	TREAD DEPTH	PRODUCT CODE	SAP ARTICLE NUMBER	RIM WIDTH IN	OVERALL INFLATED DIAMETER IN (mm)	OVERALL INFLATED WIDTH IN (mm)	LOADED SECTION WIDTH IN (mm)	STATIC LOADED RADIUS IN (mm)	MINIMUM DUAL SPACING IN (mm)	REVS PER MILE (KM)	TIRE WEIGHT LB (KG)	MAX LOAD@INFLATION			
													SINGLE		DUAL	
													lbs	psi	lbs	psi
													(KG)	(KPa)	(KG)	(KPa)
11R22.5	G	19/32	0205001	05681200000	8.25	41.5 (1054)	11.2 (284)	12.2 (310)	19.4 (493)	12.5 (318)	500 (311)	115 (52)	6175 (2800)	105 (720)	5840 (2650)	105 (720)
11R22.5	H	19/32	0205002	05681210000	8.25	41.5 (1054)	11.2 (284)	12.2 (310)	19.4 (493)	12.5 (318)	500 (311)	117 (53)	6610 (3000)	120 (830)	6005 (2725)	120 (830)
11R24.5	G	19/32	0205010	05681220000	8.25	43.5 (1105)	11.2 (284)	12.2 (310)	20.4 (518)	12.5 (318)	475 (295)	123 (56)	6610 (3000)	105 (720)	6005 (2725)	105 (720)
11R24.5	H	19/32	0205026	05681230000	8.25	43.5 (1105)	11.2 (284)	12.2 (310)	20.4 (518)	12.5 (318)	475 (295)	125 (57)	7160 (3250)	120 (830)	6610 (3000)	120 (830)
295/75R22.5	G	19/32	0205028	05681240000	8.25	40.3 (1024)	11.4 (290)	12.2 (310)	18.7 (475)	12.5 (318)	515 (320)	111 (50)	6175 (2800)	110 (760)	5675 (2575)	110 (760)
295/75R22.5	H	19/32	0205032	05681250000	8.25	40.3 (1024)	11.4 (290)	12.2 (310)	18.7 (475)	12.5 (318)	515 (320)	112 (51)	6940 (3150)	120 (830)	6175 (2800)	120 (830)
285/75R24.5	G	19/32	0205036	05681260000	8.25	41.5 (1054)	11.0 (279)	11.9 (302)	19.3 (490)	12.5 (318)	500 (311)	117 (53)	6175 (2800)	110 (760)	5675 (2575)	110 (760)

Note: Minimum Dual Spacing calculated without chains.  
These specifications subject to change without notice.