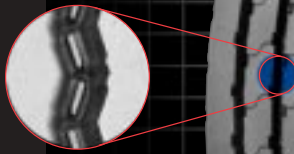


# S360

## MULTI-PURPOSE ALL POSITION

All purpose, 18/32" tread pattern provides good mileage and abrasion resistance in all-position service.

Stone ejection system reduces stone retention and casing penetration.



Multi-service tread compound provides good mileage and cut and tear resistance.



### Applications

General rib design for all position service, local delivery and short haul.

## TIRE SPECIFICATIONS Highway - 65 mph at loads indicated unless otherwise stated.

TIRE SIZE	LOAD RANGE	TREAD DEPTH	PRODUCT CODE	SAP ARTICLE NUMBER	RIM WIDTH IN	OVERALL INFLATED DIAMETER IN (mm)	OVERALL INFLATED WIDTH IN (mm)	LOADED SECTION WIDTH IN (mm)	STATIC LOADED RADIUS IN (mm)	MINIMUM DUAL SPACING IN (mm)	REVS PER MILE (KM)	TIRE WEIGHT LB (KG)	MAX LOAD@INFLATION			
													Single lbs (KG)	psi (KPa)	Dual lbs (KG)	psi (KPa)
9.00R20*	G	18	0111402	05391020000	7.00	40.1 (1018)	10.2 (258)	10.5 (267)	18.5 (471)	11.9 (301)	516 (320)	120 (54)	5675 (2595)	115 (790)	5355 (2430)	115 (790)
10.00R20*	H	18	0111290	05391040000	7.50	41.4 (1052)	10.8 (275)	11.1 (281)	19.1 (485)	12.6 (319)	500 (310)	127 (57)	6610 (3000)	120 (830)	6005 (2725)	120 (830)
11.00R20*	H	17	0111284	05391070000	8.00	42.6 (1082)	11.3 (286)	11.8 (300)	19.6 (498)	13.4 (341)	486 (301)	136 (61)	7390 (3350)	120 (830)	6780 (3075)	120 (830)
9R22.5*	G	17	0111422	05684010000	6.75	38.2 (970)	8.7 (222)	9.1 (230)	17.9 (455)	10.2 (260)	542 (336)	79 (36)	4950 (2240)	120 (830)	4675 (2120)	120 (830)

Note: Minimum Dual Spacing calculated without chains. These specifications subject to change without notice.

\*ECE Certified.