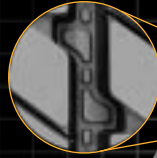


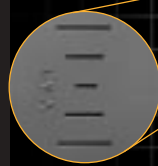
## ON/OFF HIGHWAY HEAVY SERVICE (HEAVY STEER URBAN)

Stone ejection system reduces stone retention and casing penetrations.



Cut and tear resistant tread compound provides excellent wear in both high scrub and on/off road applications.

Visual Alignment Indicators (VAI®) alert user to tire tracking problems.



New sidewall curb rib reduces damage from curbing, cuts and abrasions.

Extra deep 24/32" aggressive rib design with extra wide tread and optimized footprint provides excellent traction and long tread life.



10,000 lb load capacity for high load applications.

### Applications:

Waste haulers, construction and other on/off highway service.

## TIRE SPECIFICATIONS Speed restricted at 55 mph.

TIRE SIZE	LOAD RANGE	TREAD DEPTH	PRODUCT CODE	SAP ARTICLE NUMBER	RIM WIDTH IN	OVERALL INFLATED DIAMETER IN (mm)	OVERALL INFLATED WIDTH IN (mm)	LOADED SECTION WIDTH IN (mm)	STATIC LOADED RADIUS IN (mm)	MINIMUM DUAL SPACING IN (mm)	REVS PER MILE (KM)	TIRE WEIGHT LB (KG)	MAX LOAD@INFLATION			
													SINGLE		DUAL	
												lbs	psi	lbs	psi	
												(KG)	(KPa)	(KG)	(KPa)	
315/80R22.5*	L	24/32	0207038	05683220000	9.00	42.9 (1090)	12.6 (320)	13.5 (344)	20.2 (512)	13.8 (351)	483 (301)	150 (67)	10,000 (4540)	130 (900)	9090 (4125)	130 (900)

Note: Minimum Dual Spacing calculated without chains.

\*ECE Certified

These specifications subject to change without notice.

315/80R22.5 tires used on 8.25" rims are restricted to a maximum of 7610lbs.